

Integrates **Trimble
Global Positioning
System (GPS)**
technology.



Inventory, Inspection & Facility Design with **GSI AssetManager**



**A mobile solution used by utilities
for field data management of network assets.**



GSI AssetManager

GPS-enabled as-built and inspection tools for ArcGIS™ and Smallworld users

GSI AssetManager is a software product for capturing the location and attribution for new and existing overhead or underground utility facilities in the field.

Hardware Independence

Field workers use GSI AssetManager in the office, in the truck, and in the trench on **tablets, laptops, or Windows Mobile devices.**



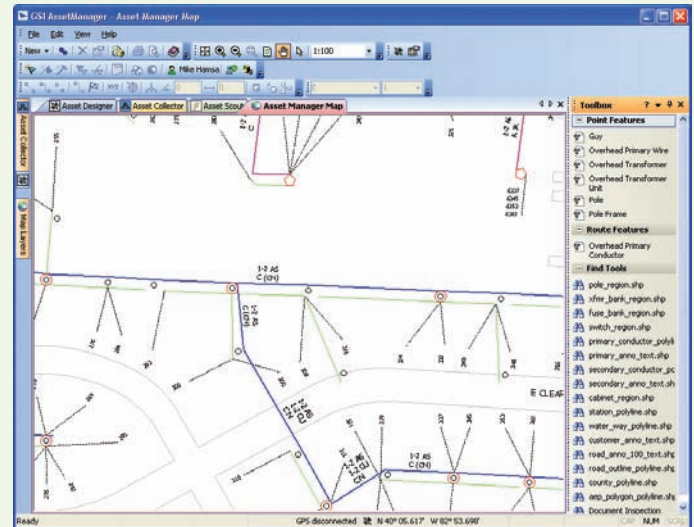
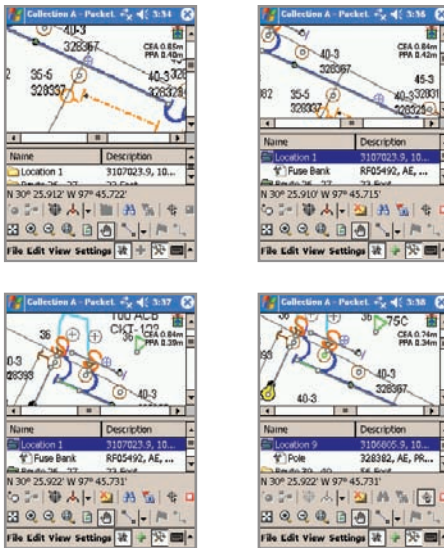
In the Trench

One size does not fit all when it comes to field solutions. Many work processes require the field worker to gather information where the work is being performed – in the trench – rather than just transcribing notes back in the truck. This work includes updating as-built facility data for GIS, designing new or existing facilities, performing walking inspections, relocating UG facilities covered by snow or earth, and capturing GPS locations of equipment. Managing network data "in the trench" streamlines business processes by:

- **Controlling rising costs to validate and maintain critical asset information**
- **Leveraging GPS technology for precision facility locations with simple, hand-held devices and tablets**
- **Reducing material costs through an optimized design**
- **Eliminating redundancy and errors related to communicating asset details from the field**

Streamlines Field Business Processes

- Perform **field inventory and data validation**
- Collect more **accurate GPS locations** of critical assets
- Capture **facility design or as-built** information to update GIS
- Query equipment scheduled for **inspection** or repair



Module showing digital maps to support data collection.

GIS AssetManager

Functionality

- Upper map area displays locations and routes on a backdrop file
- GPS “you are here” helps the user identify facilities and scrolls view when moving
- Data list shows summary of facilities for locations and routes
- Concealable toolbars make the application easy to use
- Multiple features can be added to each location or route
- Easy to understand icons and messages provide one-button GPS control
- Simple controls are provided for managing coordinate systems
- Utility-specific capture functions streamline field work

GIS Module Complete Cycle

GIS AssetManager Module for GIS enables users to take extracts of existing facility data to the field for update and verification, and/or collect new data from scratch. After the field work is complete, facility data is returned to a GIS alternative and is updated to the master dataset.

Key Features

- Create field **data dictionary** of objects, attributes, and choice values **directly from GIS** without programming
- Modify field data dictionary using a wizard, and define which **geometries use the GPS** location and offsets for text attribution
- Define **non-GIS data** to export to external systems
- Select the data you want to take to the field using a **graphical selection, query, or trace** from GIS
- **Differentially correct GPS** locations during import of data

